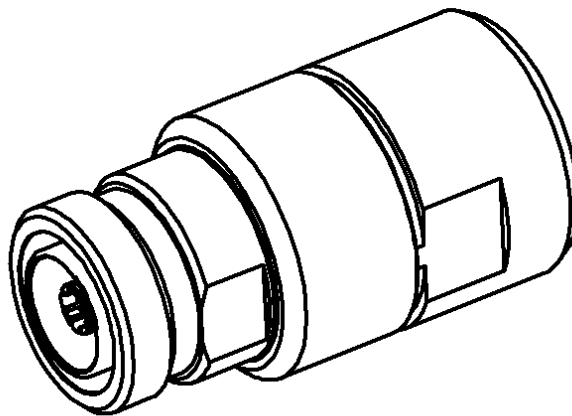
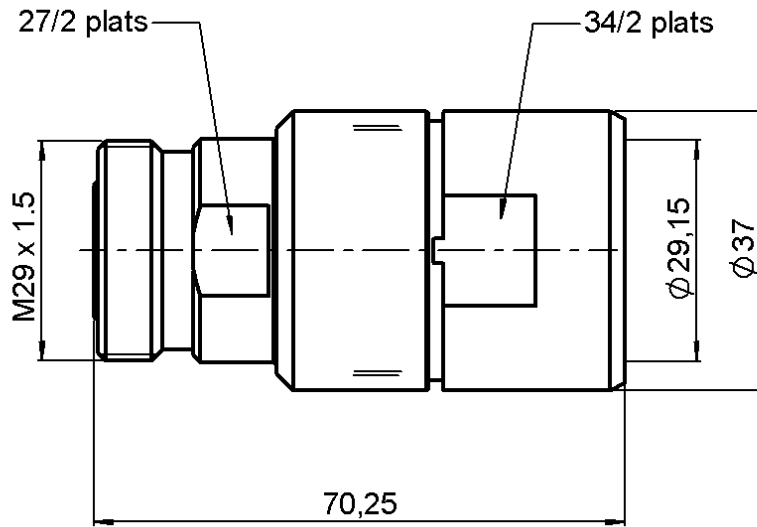


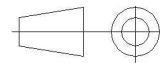
**STRAIGHT JACK EZ FIT TYPE**  
**7/8" CORRUGATED CABLE**

**R185.218.020**

Series : 7-16



All dimensions are in mm.



COMPONENTS	MATERIALS	PLATINGS (µm)
BODY	BRASS	BBR 0.5 OVER SILVER 3
CENTER CONTACT	BERYLLIUM COPPER, BRASS	SILVER 5 PASSIVATED OVER COPPER 0.5
OUTER CONTACT	BRASS	BBR 0.5 OVER SILVER 3
INSULATOR	PTFE	
GASKET	SILICONE RUBBER	
OTHERS PARTS	-	-
-	-	-
-	-	-

Issue : 0422 A

In the effort to improve our products, we reserve the right to make changes judged to be necessary.



**STRAIGHT JACK EZ FIT TYPE**  
**7/8" CORRUGATED CABLE**

**R185.218.020**

Series : 7-16

**PACKAGING**

Standard	Unit	Other
<b>1</b>	-	<b>Contact us</b>

**SPECIFICATION**

**ELECTRICAL CHARACTERISTICS**

Impedance		<b>50</b> Ω
Frequency		<b>0-7.5</b> GHz
VSWR	* +	<b>0.000</b> x F(GHz) Maxi
Insertion loss		<b>0.05</b> √F(GHz) dB Maxi
RF leakage	- (	<b>NA</b> - F(GHz)) dB Maxi
Voltage rating		<b>1400</b> Veff Maxi
Dielectric withstanding voltage		<b>2700</b> Veff mini
Insulation resistance		<b>10000</b> MΩ mini

**CABLE ASSEMBLY**

Stripping	a	b	c	d	e	f
mm	26.0	0.00	0.00	0.00	0.00	0.00

Assembly instruction :

Recommended cable(s)  
LCF 7/8" Cu2Y  
M 1474 Z  
LDF5-50A-7/8"

**MECHANICAL CHARACTERISTICS**

Center contact retention		
Axial force – Mating end	<b>200</b>	N mini
Axial force – Opposite end	<b>100</b>	N mini
Torque	<b>NA</b>	N.cm mini

Cable retention

- pull off	<b>500</b>	N mini
- torque	<b>NA</b>	N.cm

**TOOLING**

Part Number	Description	Hexagon
R282.011.060	STRIPPING TOOL FOR CABLE 7/8 CORRUGATED	-

Recommended torque		
Mating		N.cm
Panel nut		N.cm
Clamp nut	<b>2500</b>	N.cm
A/F clamp nut	<b>33.900</b>	mm

**OTHERS CHARACTERISTICS**

\* ROS 1.06 max < 2.5GHz  
\*\*IMP3 =-112dBm à 1.8GHz ( 2 x 20W )  
Watertightness : IP 68

Mating life	<b>500</b>	Cycles mini
Weight	<b>259.500</b>	g

**ENVIRONMENTAL**

Operating temperature	<b>-55/+155</b>	° C
Hermetic seal	<b>NA</b>	Atm.cm3/s
Panel leakage	<b>NA</b>	

Issue : 0422 A

In the effort to improve our products, we reserve the right to make changes judged to be necessary.

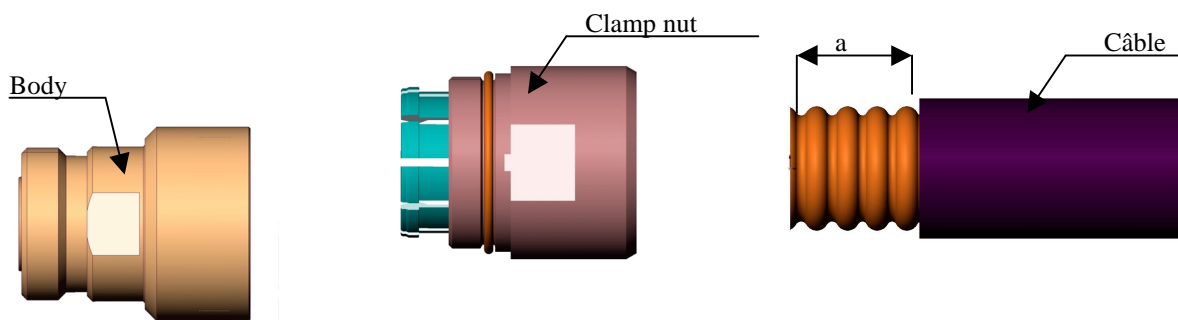


**STRAIGHT JACK EZ FIT TYPE**

**7/8" CORRUGATED CABLE**

**R185.218.020**

Series : 7-16



**1) STRIPPING OF THE SHEATH**

Cut the front extremity of the cable in the summit of a annelure with a hacksaw (cote a).

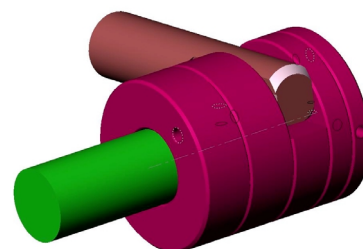
Raise the handle and introduce the cable until it stops in the stripping tool.

Push down the handle by exerting a light pressure on it, keep turning the tool until it turns freely + appointing of the interior of the soul of the cable.

Raise the handle, and slide the cable out.

To split the sheath with a tool cutting perpendiculary to the previously undertaken split.

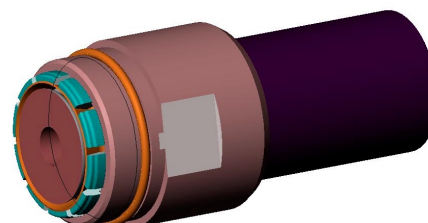
To remove the sheath cut.



**2) CABLE MOUNTING**

Mount the clamp nut on the cable, until the clipsage of the elastic contact on the first annelure.

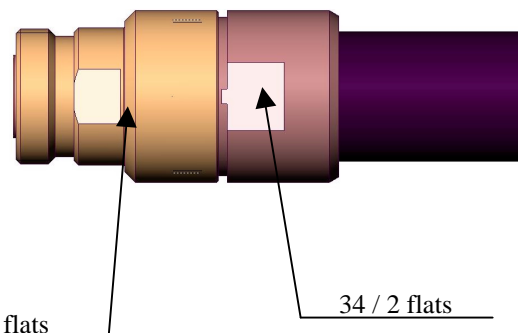
To push the part defers the tow press in stop on the elastic contact.



**3) MOUNTING CABLE**

Mount the clamp nut with the cable in the body of the connector.

Couple of tightening recommended: 2500N.cm



Issue : 0422 A

In the effort to improve our products, we reserve the right to make changes judged to be necessary.

